

ZINO AVIATION 

in partnership with



EASA ATPL PILOT PROGRAMME

Megara, Greece





The Programme

Our EASA (European) Pilot Training Course is in partnership with our partner flight school, TAE Aviation Academy located in **Megara, Greece**.

The course duration is approximately **15-17 months**. This course will make you a fully qualified Commercial Pilot possessing a Frozen Airline Transport Pilot License as well as a Private Pilot License, Commercial Pilot License, Night Rating, Multi-Engine Rating, Instrument Rating and Multi-Crew Cooperation certificate.

The weather in Greece is great. With average highs of 32 degrees during the summertime and 17 degrees during the winter which means you can fly on a daily basis with minimum disruption due to weather. Your training will be conducted using new, state-of-the-art, Diamond DA42 and DA20 aircraft which are the most modern training aircraft in their category worldwide.

ATPL Programme

You will conduct the following training:

Private Pilot License (PPL) - You'll learn how to fly from scratch, conduct flight manoeuvres and then pass practical and theoretical exams. On completion of your PPL, you will be able to fly by yourself without an instructor. You can start building hours for your CPL and fly friends & family.

Night Rating (NR) - During your training, you will be taught how to fly at Night. The rating allows pilots to fly at night exercising visual flight rules (VFR).

Instrument Rating (IR) - During your IR training, you will be taught how to fly in sole reference to your instruments, allowing you to fly at night, in reduced visibility, and in instrument meteorological conditions (IMC).

Commercial Pilot License (CPL) - You require a CPL if you want to fly for airlines and get paid to fly. You will be trained to a much higher standard than the PPL. You'll build more flight hours and will be practically, theoretically and orally examined by an examiner.

Multi-Engine Rating (MER) - During your MER training, you will be taught how to fly aircraft with multiple engines as multi-engine aircraft possess different aerodynamic characteristics than single-engine aircraft.

Multi-Crew Cooperation (MCC) - MCC training is to help you become proficient in multi-crew cooperation to safely operate multi-pilot, multi-engine airplanes. The objectives of MCC training are optimum decision making, communication, allocation of tasks, use of checklists and teamwork under normal, abnormal and emergency conditions.

Upset Prevention and Recovery Training (UPRT) - During this stage of your pilot training you will get to know how to cope with the event of "loss of control in flight" and to develop the necessary competence and resilience to be able to apply appropriate recovery techniques during upsets.



FROZEN AIRLINE TRANSPORT PILOT LICENSE (ATPLf)

Why choose this programme?



**World Class
Flight School**



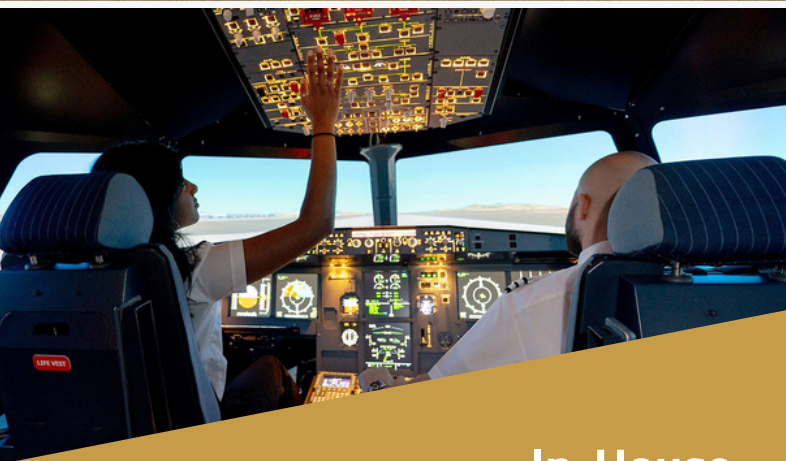
**New & Modern
Aircraft**



**Amazing
Location / Weather**



**Affordable
Training**



**In-House
Simulators**

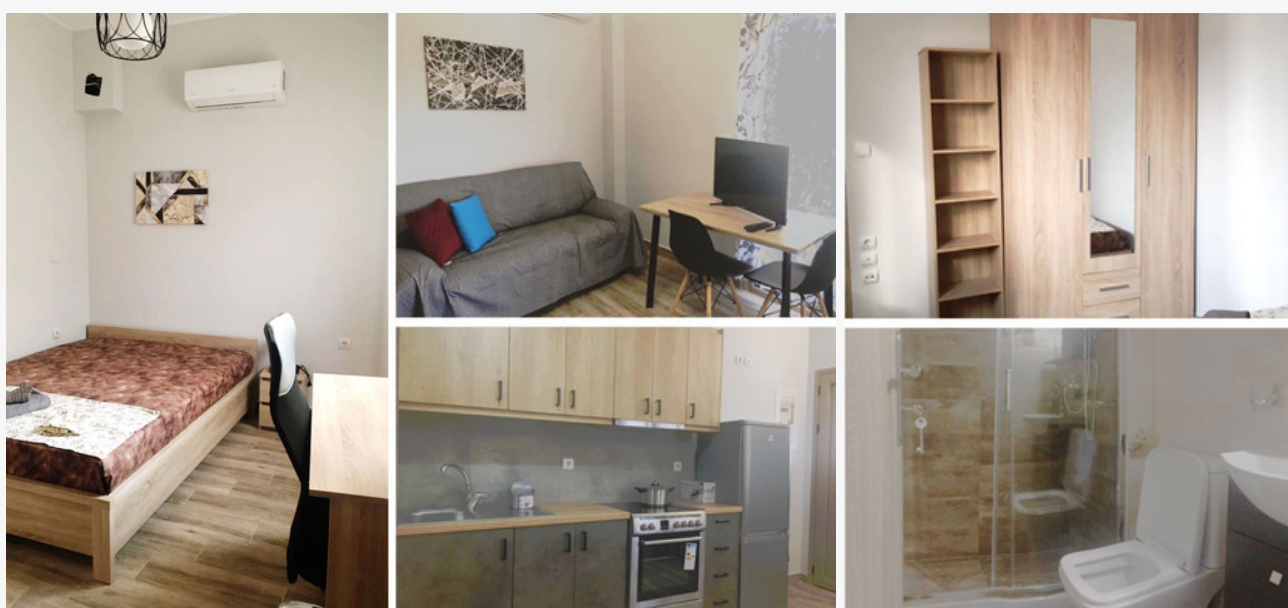


**Experienced
Instructors**



Accommodation

There are several accommodation options available for your stay in Greece. The flight schools provide accommodation within a 5-10 minute walk of the airport, or you can source accommodation from the private market. Prices vary vastly depending on the chosen accommodation and if you are the sole occupant or choose to share accommodation with flatmates/roommates. For sole occupancy, you can expect to pay approximately €300-350 per month. For shared accommodation, you can expect to pay around half of this. Accommodation will be arranged for you when you have secured your visa.



Transport

TAE Aviation Academy provides students with free of charge transport from the accommodation to their premises and the airport. For those who decide to find accommodation in the private market, transportation will still be provided and for those who do not wish to live in Megara and prefer Athens or elsewhere, TA also provides transportation from Megara train station to the Flight Academy.



Mentorship

with Captain Zino

The Mentorship Programme is an optional add-on. On this programme you will receive continuous and comprehensive mentorship from Capt. Zino for 18 months.

You will have unrestricted access to Capt. Zino and all his expertise. You will have his personal Number, Whatsapp, Facetime and Google account. You will be able to contact him whenever you want to ask questions, strategize, receive advice and grow under his mentorship.

Capt. Zino will effectively mentor, equip and support you throughout your journey to becoming a Commercial Pilot, covering the 3 key stages: Before, During and After flight school.

Before Flight School

He'll be thoroughly preparing you in the months leading up to attending flight school. This will result in you understanding everything and being well prepared on arrival, meaning you'll struggle significantly less, be miles ahead and will hit the ground running when you get there.

During Flight School

Flight school is really tough and 80% of people who start, don't finish (AOPA). Capt. Zino will be there to advise, support and encourage you throughout flight school. He'll be there to pick you up when you're down and keep you going. There are also a lot of decisions to make when at flight school and he will be there to discuss and strategize with so you make all the right decisions.

After Flight School

Capt. Zino will be assisting you in the process of landing your first job. Zino Aviation will do your CV and Cover Letter and you will receive preparation for your airline interview through mock interviews.

You will strategize with Capt. Zino on how to secure a job, receive the contact information of key people and learn how to shortcut the queue and secure employment ahead of everybody else.

To join the mentorship programme you will need to pass a Psychometric Aptitude Test and pay a mentorship fee. Email programmes@zinoaviation.com for more information.



How much does the programme cost?

The ATPL Integrated course, costs
€62.000 without any hidden fees!

What is included in this price?

- Ground and Flight training as described above
- Pilot's uniform & equipment (including Headsets)
- Training material (CAE CBT access code)
- Fees for the first attempt at all 13 EASA subjects exams
- Fees for 1st attempt of Aviation English Test Proficiency
- Skill Test (examiner's fees)
- HCAA License Issuance fees
- Airport Fees
- Expenses for Night Rating (accommodation & fees)
- Transportation to/from the Academy and Airport, as well as to/from accommodation and Academy

What is not included in this price?

- Visa and Visa Agent Fees
- Pilot Medical and Medical Insurance
- Accommodation & Feeding

This course quote is based on EASA Prescribed minimums. Individual training may vary subject to your flying ability. Students with lower abilities may require more flight or ground lessons. To factor this in, we recommend budgeting an extra 10-15% of your flight costs just in case more training is needed.

The projected timescale of the programme is approximately 15-17 months. It should be noted that depending on your ability, the programme timeline might be less or more. If you work hard, fly regularly and are very competent, you can complete your training in 15 months. Also due to the dynamic nature of flight training, setbacks and unforeseen eventualities can affect the projected timeline. Eventualities such as aircraft maintenance, bad weather or retaking failed exams can all contribute to extending the programme time.

Admission Fee & School Fees Payment

Holders of EU passports wishing to enrol on the integrated ATPL Course must pay €9500 of the €62,000 to enrol on the course. The remaining amount will be divided into 4 instalments and paid over the duration of your training. The first of these instalments is due 7 months after you begin your training (when you complete your theoretical exams).

Non-EU Passport Holders need to pay 1/3 of their total training tuition (€21,000) and submit the proof of payment to the Embassy. This is a mandatory requirement by the Government of Greece for students to be issued a Greek Student Visa. The remaining tuition money (€41,000) is to be paid in 3 equal instalments over your training.

VISA

Once the admission fees are paid to the flight school, you will be granted admission. You will receive the admission letter and all appropriate documentation will be issued to you.

Our partner visa agents can handle the Visa booking process for you for a small additional fee, unless you have your own agent or wish to handle it yourself.

Admission Dates

ATPL Integrated classes commence in September 2022 and April yearly.
Modular programmes can commence anytime.

Entry Assessment

As part of the admission process, TAE Aviation Academy has established a selection procedure to ensure that you have the appropriate skills to enrol in the course. After you apply, we will send you the link for the online entrance assessment.

Refund Policy

In the case of a refused visa, you will receive a full refund from TAE of the funds paid minus €500.



ARE YOU READY TO START **FLYING?**

We highly recommend starting the Admissions process with us ideally 3-4 months before the date you want to start your training. This allows plenty of time to complete the flight school's admissions process, receive your documents, as well as book and attend your Visa appointment. **To enrol on this programme follow the instructions below.**



STEP 1

Please send the following items to **programmes@zinoaviation.com**:

1. Passport page
2. Home address
3. Email Address
4. Phone number
5. Start/Intake date for integrated ATPL, or, your desired start date for modular programmes like PPL.

Note: Your start date should be realistic. You will need to factor in the fact that you need to get a Visa appointment in your home country which may take several weeks or months.

After we receive the information above, we will get in touch with you. We will send you a detailed application form and a link for the online selection assessment.



STEP 2

Sit Online Assessment:

After we receive the information in Step 1, we will send you the link for an online entrance assessment.

After you are successful, payment will need to be made to TAE to be granted admission to the school.

Admission Fee - \$5000



STEP 3

Pay Admission Fee

* Account details will be provided

EU Passport Holders: €9500 out of your total tuition fees must be paid.

Non-EU Passport Holders €21,000 out of your total tuition must be paid and proof of payment submitted to the Embassy.

This is a mandatory requirement by the Greek government for students to be issued a Greek Student Visa.



WHAT NEXT?

After the Admission fees are paid you will gain admission to the flight school.

- 1. An admission letter will be sent to you.**
- 2. We will provide you with all the required documents for your visa interview (if you are not an EU citizen).**
- 3. You will need to take out a Medical Insurance policy in Greece as part of your Visa Application. We can assist with this.**

Our partner visa agents can handle the Visa booking process for you for a small additional fee unless you have your own agent or wish to wish to handle it yourself.

After successfully attending your visa interview and getting your visa, you can book your flight tickets. We will then liaise with the flight school to meet your transport and accommodation needs.



STOP DREAMING, START FLYING

To begin the admission process or ask any further questions,
please email: programmes@zinoaviation.com

Being a Pilot is one of the greatest careers in the world.
We look forward to helping you finally achieve your dreams.

ZINO AVIATION 

ZINO AVIATION 



in partnership with



WWW.ZINOAVIATION.COM

